

GATWAY WEST BUSINESS CENTER

ROSEVILLE, MINNESOTA

SIGNAGE CRITERIA

GENERAL NOTES

- 1) TENANT SHALL BE RESPONSIBLE FOR THE PURCHASE, INSTALLATION AND MAINTAINENCE OF ALL SIGNS DESCRIBED IN THIS CRITERIA PACKAGE.
- 2) TENANT SHALL OBTAIN OWNER'S APPROVAL AND CITY PERMITS PRIOR TO ANY SIGNAGE INSTALLATION.
- 3) TENANT MAY SOLICIT BIDS FROM ANY SIGN MANUFACTURER OF TENANT'S CHOICE.
- 4) OWNER RESERVES THE RIGHT TO APPROVE ANY ALTERNATE SIGNAGE WHEN DEEMED APPROPRIATE AT THE OWNER'S SOLE DISCRETION.
- 5) SIGNAGE ON THE BUILDING FRONT SHALL BE AS DESCRIBED ON PAGE 2 AND 3.
- 6) DOCK AND DRIVE-IN DOORS SHALL BE IDENTIFIED AS DESCRIBED ON PAGE 4.
THIS SIGNAGE MAY BE PROVIDED AT THE TENANT'S DISCRETION-IT IS NOT REQUIRED BY THE OWNER.
- 7) SERVICE AND MAN DOORS IN THE TRUCK DOCK AREA SHALL BE IDENTIFIED AS DESCRIBED ON PAGE 5. THIS SIGNAGE MAY BE PROVIDED AT THE TENANT'S DISCRETION-IT IS NOT REQUIRED BY THE OWNER.

SUBMITTALS

- 1) TENANT SHALL SUBMIT TO THE OWNER, TWO COPIES OF ALL SIGN FACE LAYOUTS, AND THE LOCATION OF ALL SIGNS ON THE BUILDING, FOR APPROVAL.
- 2) TENANT OR THE TENANT'S SIGN CONTRACTOR SHALL SUBMIT SIGNAGE PLANS TO THE CITY, AS REQUIRED BY THE CITY, FOR PERMITS.



CSM

500 Washington Avenue South, Suite 3000
Minneapolis, MN 55415
Bus: (612) 395-7000 Fax: (612) 395-7002

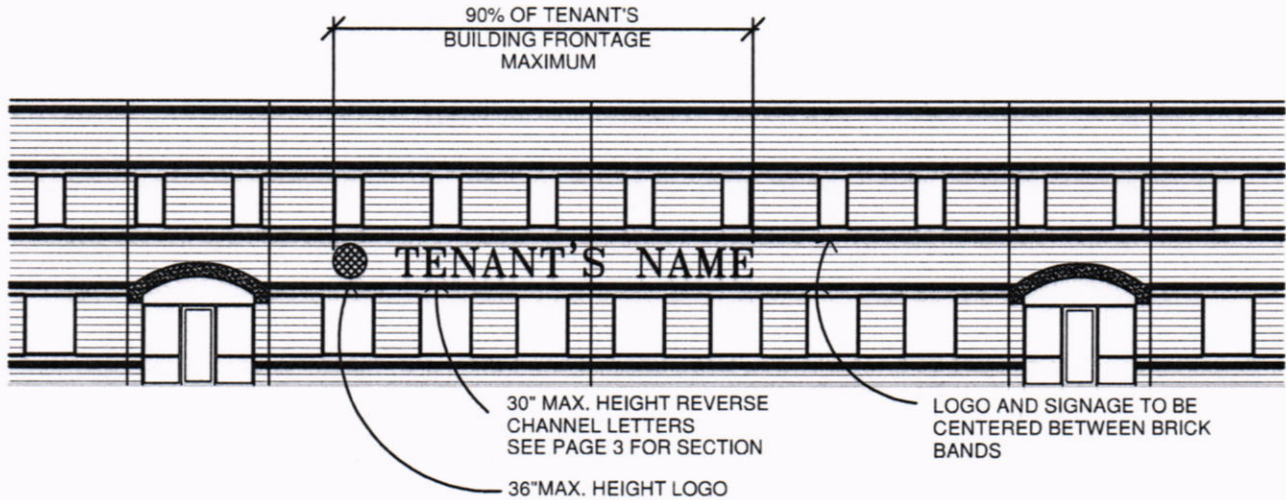
DEVELOPING REAL ESTATE FOR PEOPLE,
BUSINESS & COMMUNITIES

PAGE 1 of 5
4/12/04

GATEWAY WEST BUSINESS CENTER

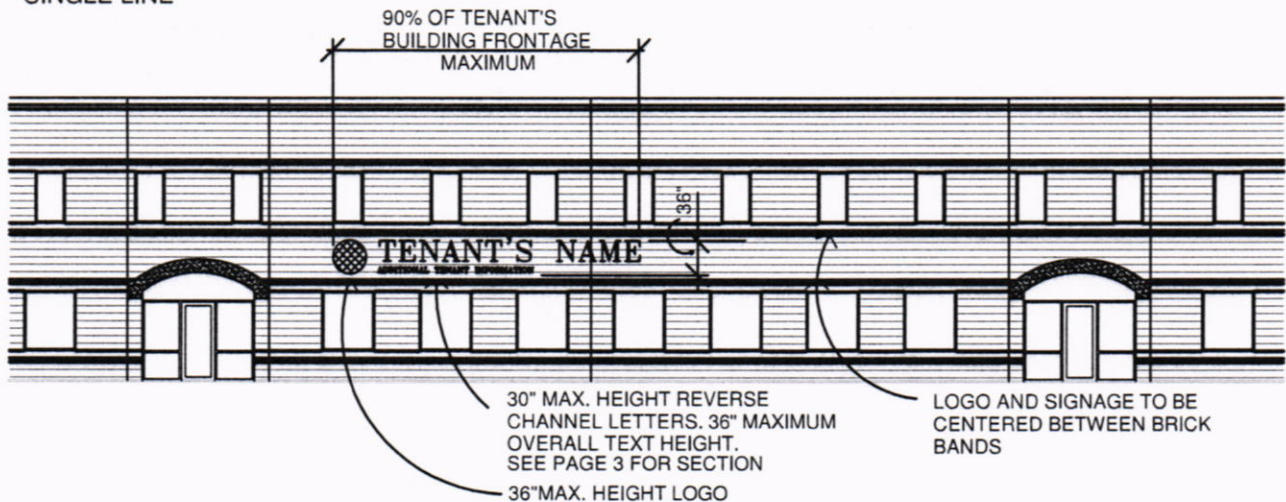
ROSEVILLE, MINNESOTA

SIGNAGE CRITERIA



PARTIAL ELEVATION

SINGLE LINE



PARTIAL ELEVATION

MULTIPLE LINES



CSM

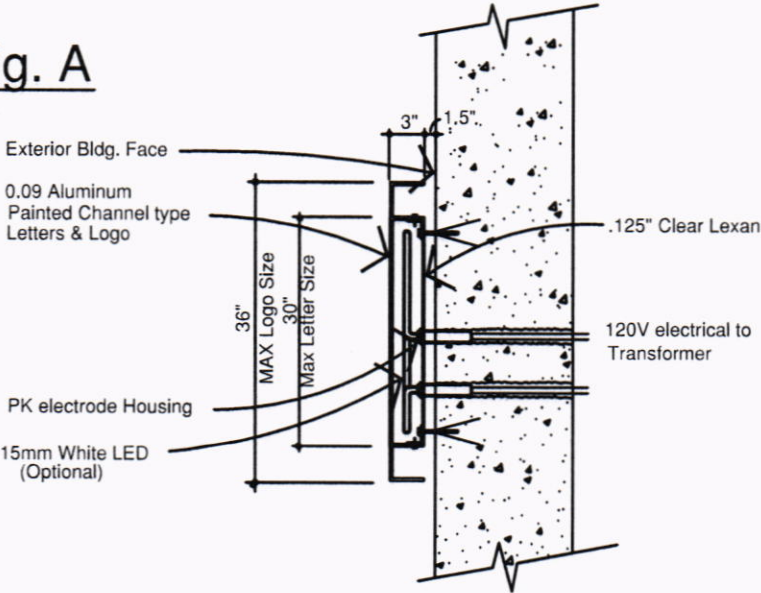
500 Washington Avenue South, Suite 3000
Minneapolis, MN 55415
Bus: (612) 395-7000 Fax: (612) 395-7002

DEVELOPING REAL ESTATE FOR PEOPLE,
BUSINESS & COMMUNITIES

GATEWAY WEST BUSINESS CENTER ROSEVILLE, MINNESOTA

SIGNAGE CRITERIA

Fig. A



SIGNAGE NOTES

- 1. LOGO: MAX SIZE: 4'-0" LONG x 3'-0" HIGH
MAX. AREA: 12 SQUARE FEET
COLOR: MAY MATCH TENANT'S COLOR CRITERIA
LIGHTING: MAY BE INTERIOR ILLUMINATED
WITH FACE LIGHTED.

- 2 TENANT NAME: SINGLE LINE SHALL BE 30" MAX. HEIGHT
MULTIPLE LINES SHALL BE NO HIGHER THAN
36" HEIGHT WITH CHARACTERS NOT EXCEEDING 30".



CSM

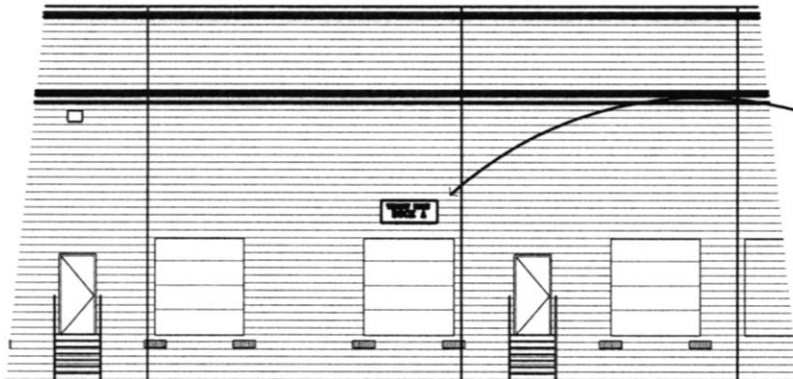
500 Washington Avenue South, Suite 3000
Minneapolis, MN 55415
Bus: (612) 395-7000 Fax: (612) 395-7002

DEVELOPING REAL ESTATE FOR PEOPLE,
BUSINESS & COMMUNITIES

GATEWAY WEST BUSINESS CENTER

ROSEVILLE, MINNESOTA

SIGNAGE CRITERIA



5'-0" WIDE x 2'-0" HIGH
x .125 THICK PAINTED
ALUMINUM SIGN PANEL. WITH 6"
MAXIMUM HEIGHT VINYL OR
STENCILED LETTERS.

MOUNT 16" ABOVE AND
CENTERED OVER DOOR OPENING.

PAINT COLOR:
BENJAMINE MOORE #269

PARTIAL ELEVATION

OVERHEAD DOOR IDENTIFICATION



CSM

500 Washington Avenue South, Suite 3000
Minneapolis, MN 55415
Bus: (612) 395-7000 Fax: (612) 395-7002

DEVELOPING REAL ESTATE FOR PEOPLE,
BUSINESS & COMMUNITIES

PAGE 4 of 5
4/12/04

