

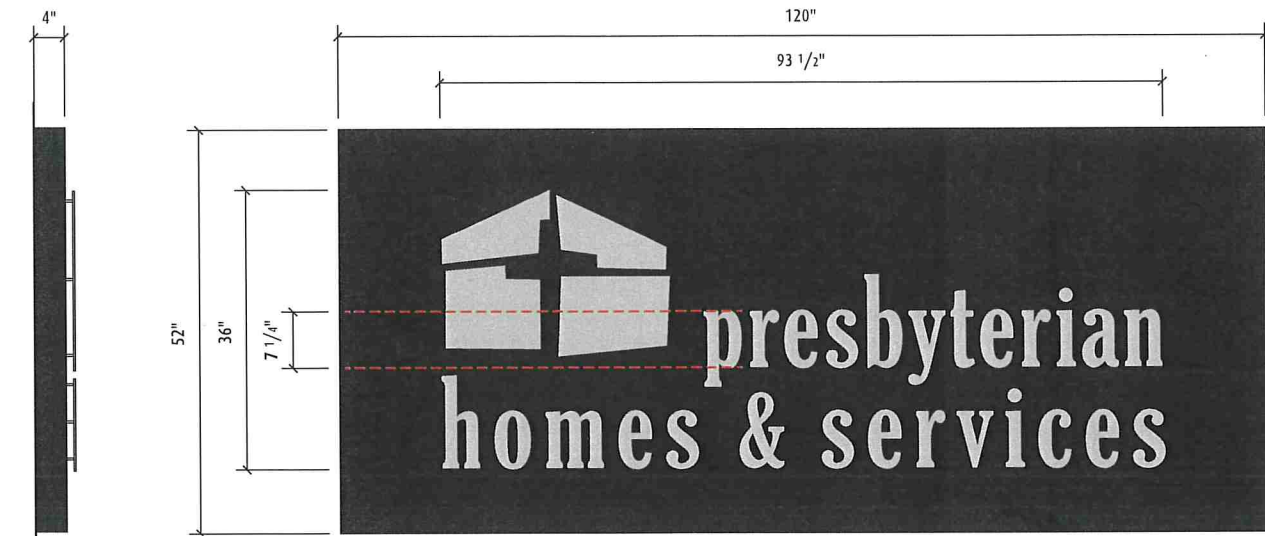
# Sign Type Y.1

Single-Faced LED Illuminated Pan ID  
(North Elevation)

## Specifications

ASI Series: Custom  
 Size: 52"(h) x 120"(w) x 4"(d)  
 Mounting: Mechanically mounted to aluminum angle reverse pan with counter sunk screws painted to match pan; Reverse pan mounted to Brick

Note(s):  
 - 43.4 sq/ft  
 - Internally Illuminated using White LED's (Equal Housing logo non-illuminated as vinyl)  
 - 120v electrical to be provided  
 - Remote power supply

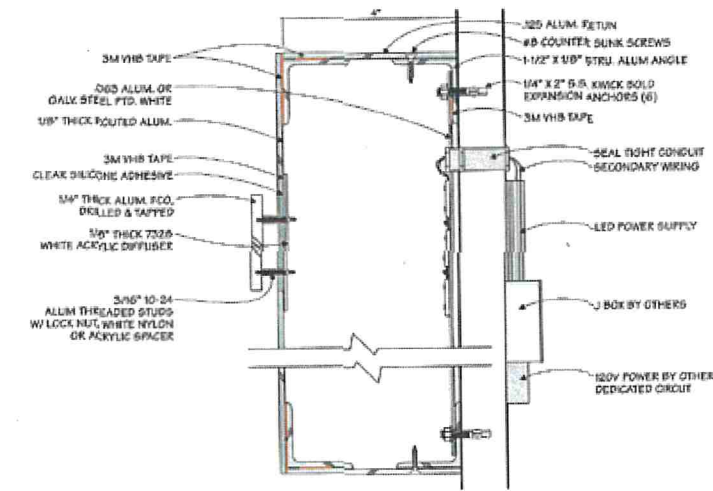


Fabricated 4"(d) aluminum angle pan sign with routed face, painted on all sides to match Pantone 426C (100 grit orbital sand & #314 extra dark bronze anodized finish);

Presbyterian Homes logo to be routed out of cabinet & backed with 1/8"(t) 7328 White Acrylic Diffuser

Presbyterian Homes logo to be 1/4"(t) cut aluminum with Brushed Clear Anodized finish (horizontal grain) to stand off using 1" spacers; Mounted to 1/8"(t) 7328 White Acrylic Diffuser with 3/16 (10-24) and 1/8" (6-32) threaded aluminum studs, lock nuts & white acrylic spacers; Acrylic mounted 2nd surface of pan face with 1/32" Grey VHB tape & Silicone Adhesive

Qty: 1



Side View Detail

Client: Presbyterian Homes & Services  
 Project: Langton Shores - Exterior Signage  
 Location: Roseville, MN  
 Keyword(s): Building ID, Illuminated

Scale: 1/2" = 1'  
 Date: 10.02.19  
 Drawn By: BMV  
 Sales / PM: TC / JM  
 File Name: 1\_PH-LS\_Ext\_Y.1\_10.19

DRAWING REVISIONS  
 Rv1: 10.21.19 Rv2: 11.06.19 Rv3: 11.12.19  
 Rv4: 12.17.19 Rv5: 12.23.19 Rv6: \*

DESIGN STATUS:  APPROVED  
 Approved As Noted  
 Revise & Resubmit  
 DATE: \_\_\_\_\_  
 SIGN: \_\_\_\_\_

Tel 612.332.1223 Fax 612.332.1224

**asi** Signage Innovations™  
 Minneapolis, Minnesota  
 Milwaukee, Wisconsin  
 Seattle, Washington  
 Portland, Oregon  
 asisignage.com

SHEET 1

These drawings involve confidential proprietary rights of ASI & all design, manufacturing, reproduction, use & sale rights regarding the same are expressly reserved. These drawings are submitted under a confidential relationship for a specified purpose & the recipient, by accepting this document, assumes custody & agrees (a) that this document will not be copied or reproduced in whole or in part, nor its contents revealed in any manner or to any person except to meet the purpose for which it was delivered & (b) that any special features peculiar to this design will not be incorporated in other projects

Side View

Layout View (Location 2)

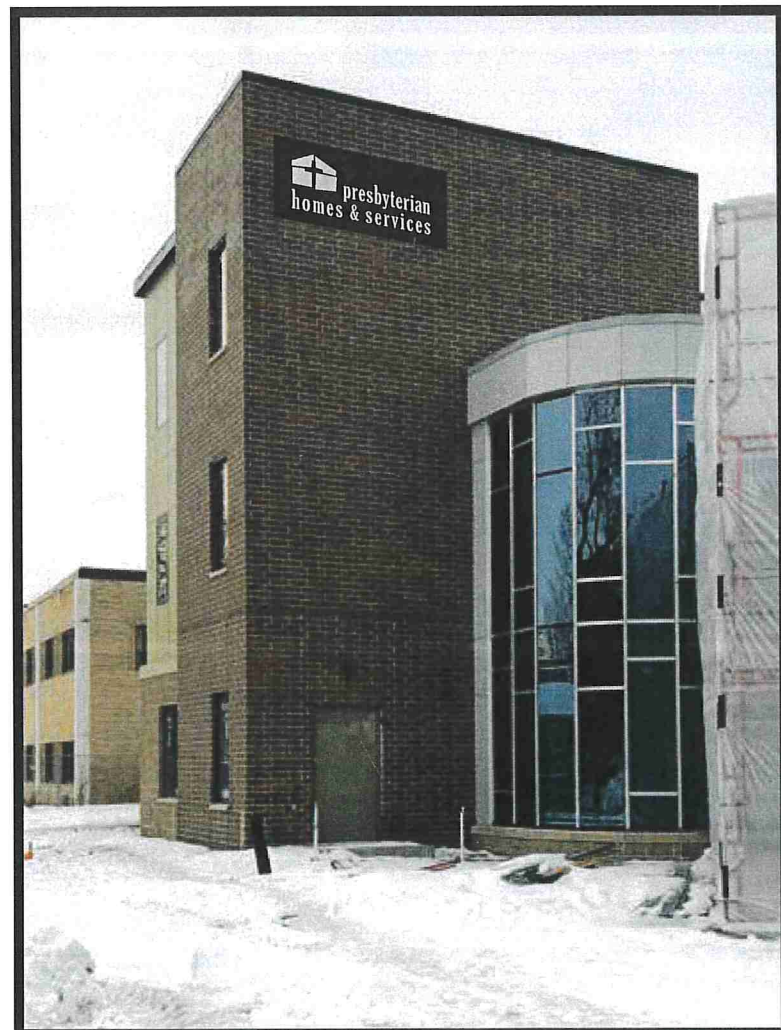


Photo Renderings



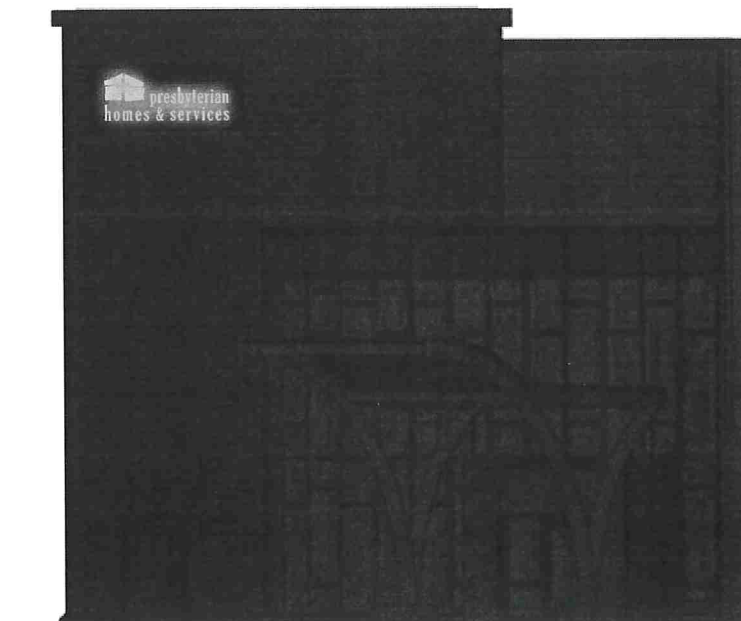




Elevation View (North Elevation)



Elevation View - Day (Rendering)



Elevation View - Evening (Rendering)

# Sign Type Y.1

Single-Faced LED Illuminated Pan ID

(North Elevation)

Elevation Renderings

Client: Presbyterian Homes & Services  
 Project: Langton Shores - Exterior Signage  
 Location: Roseville, MN  
 Keyword(s): Building ID, Illuminated

Scale: 1/8" = 1'  
 Date: 12.17.19  
 Drawn By: BMV  
 Sales / PM: TC / JM  
 File Name: 1.1\_PH-LS\_Ext\_Y.1\_10.19

DRAWING REVISIONS		
Rv1: 12.23.19	Rv2: °	Rv3: °
Rv4: °	Rv5: °	Rv6: °

DESIGN STATUS:  APPROVED  
 Approved As Noted  
 Revise & Resubmit

DATE: \_\_\_\_\_  
 SIGN: \_\_\_\_\_

Tel 612.332.1223 Fax 612.332.1224

**asi**  
 Signage Innovations™  
 Minneapolis, Minnesota  
 Milwaukee, Wisconsin  
 Seattle, Washington  
 Portland, Oregon  
 asisignage.com

SHEET 1.1

These drawings involve confidential proprietary rights of ASI & all design, manufacturing, reproduction, use & sale rights regarding the same are expressly reserved. These drawings are submitted under a confidential relationship for a specified purpose & the recipient, by accepting this document, assumes custody & agrees (a) that this document will not be copied or reproduced in whole or in part, nor its contents revealed in any manner or to any person except to meet the purpose for which it was delivered & (b) that any special features peculiar to this design will not be incorporated in other projects.

'1900' address numbers by Other



# Sign Type U.1

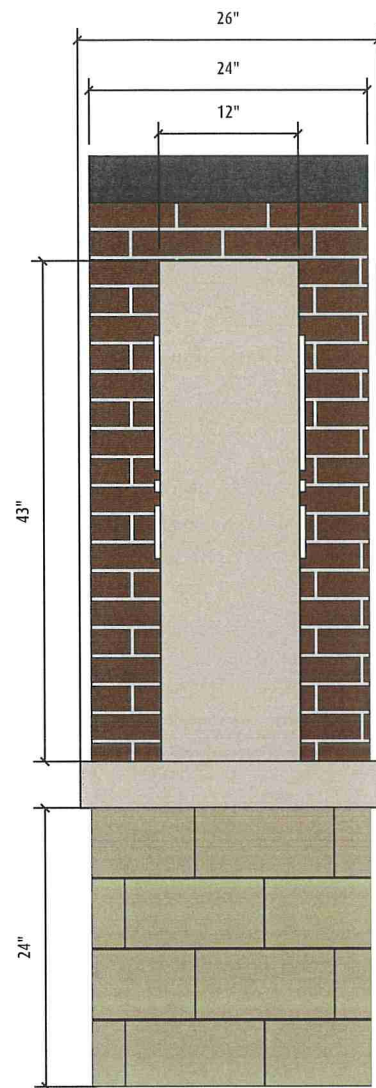
## Primary Entrance ID

### Specifications

ASI Series: Custom  
 Cabinet Size: 43"(h) x 96"(w) x 12"(d)  
 Mounting: Mechanical Mount

### Note(s):

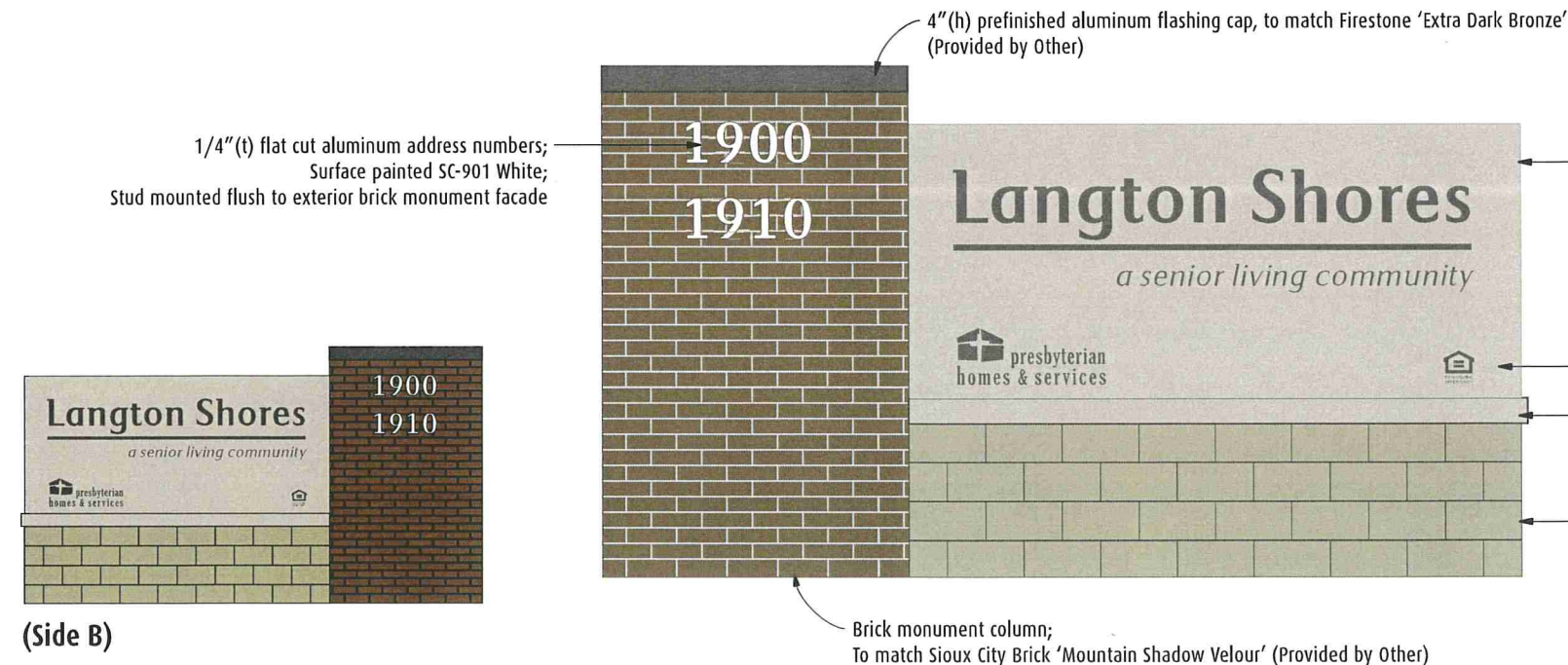
- 28 sq/ft
- Internally Illuminated using White LED's
- 120v
- Photo Eye & Switch



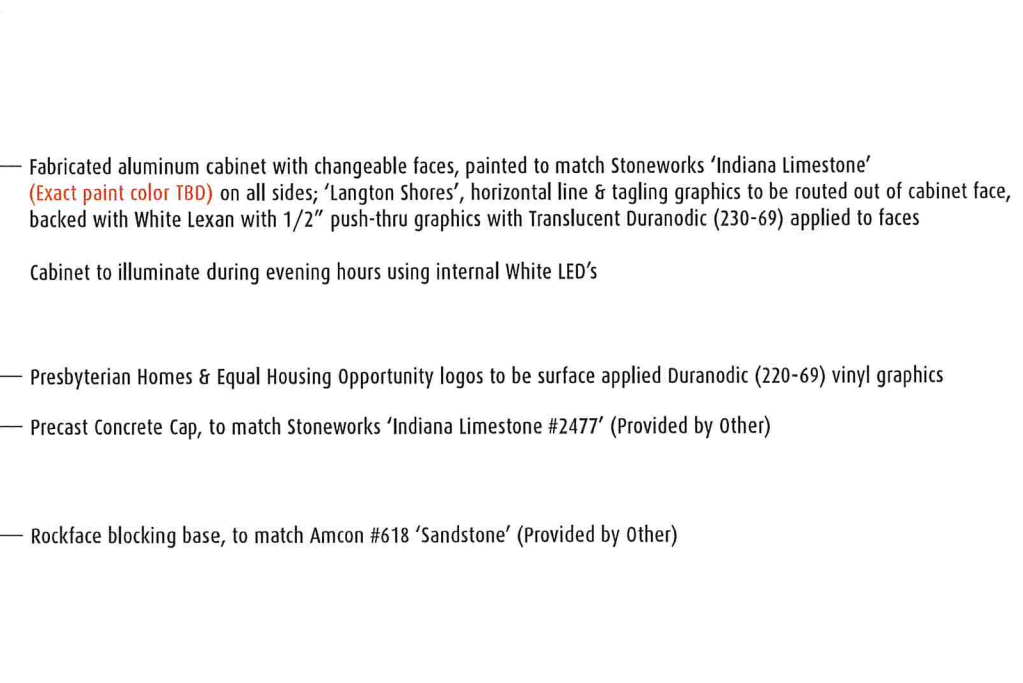
Side View



Layout View - Side A (Location 1) Qty: 1



(Side B)



Client: Presbyterian Homes & Services  
 Project: Langton Shores - Exterior Signage  
 Location: Roseville, MN  
 Keyword(s): Building ID, Illuminated

Scale: 1/16" = 1"  
 Date: 10.02.19  
 Drawn By: BMV  
 Sales / PM: TC / JM  
 File Name: 2\_PH-LS\_Ext\_U.1\_10.19

DRAWING REVISIONS

Rv1: 10.21.19	Rv2: 11.06.19	Rv3: 11.12.19
Rv4: *	Rv5: *	Rv6: *

DESIGN STATUS:  APPROVED  
 Approved As Noted  
 Revise & Resubmit

Tel 612.332.1223 Fax 612.332.1224



SHEET 2

These drawings involve confidential proprietary rights of ASI & all design, manufacturing, reproduction, use & sale rights regarding the same are expressly reserved. These drawings are submitted under a confidential relationship for a specified purpose & the recipient, by accepting this document, assumes custody & agrees (a) that this document will not be copied or reproduced in whole or in part, nor its contents revealed in any manner or to any person except to meet the purpose for which it was delivered & (b) that any special features peculiar to this design will not be incorporated in other projects.



# Sign Type U.2

## Secondary Entrance ID

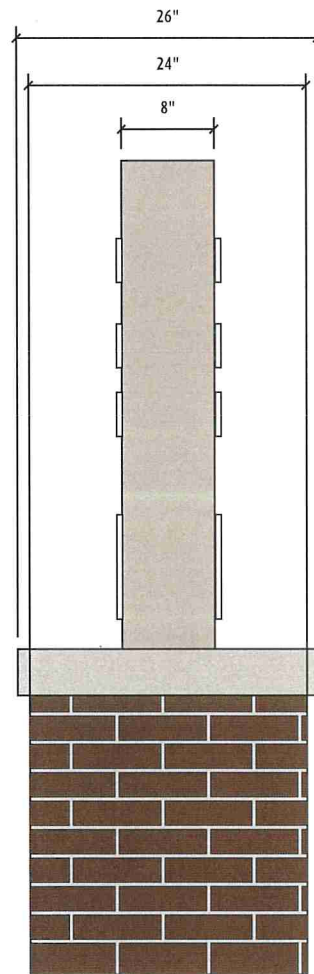
### Specifications

ASI Series: Custom  
 Cabinet Size: 42"(h) x 45"(w) x 8"(d)  
 Mounting: Mechanical Mount

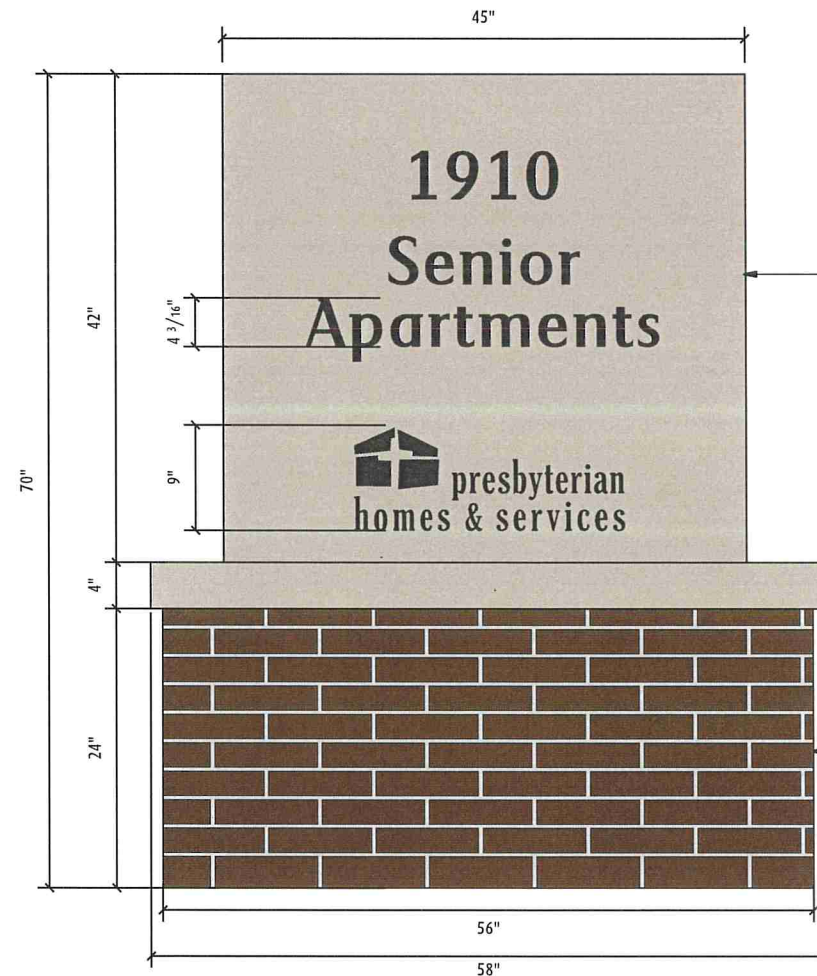
### Note(s):

- Internally Illuminated using White LED's
- 120v
- Photo Eye & Switch

°Phase II Sign°



Side View



Layout View - Side A/B (Location 4 - Phase 2)

Qty: 1

Fabricated aluminum cabinet with changeable faces, painted to match Stoneworks 'Indiana Limestone' (Exact paint color TBD); Graphics to be routed out of cabinet face, backed with White Lexan with 1/2" push-thru graphics with Translucent Duranodic (230-69) applied to faces

Cabinet to illuminate during evening hours using internal White LED's

Precast Concrete Cap, to match Stoneworks 'Indiana Limestone #2477' (Provided by Other)

Rockface blocking base, to match Amcon #618 'Sandstone' (Provided by Other)

Client: Presbyterian Homes & Services  
 Project: Langton Shores - Exterior Signage  
 Location: Roseville, MN  
 Keyword(s): Building ID, Illuminated

Scale: 1/16" = 1"  
 Date: 10.02.19  
 Drawn By: BMV  
 Sales / PM: TC / JM  
 File Name: 3\_PH-LS\_Ext\_U.2\_10.19

### DRAWING REVISIONS

Rv1: 10.21.19	Rv2: 11.06.19	Rv3: °
Rv4: °	Rv5: °	Rv6: °

DESIGN STATUS:  APPROVED  
 Approved As Noted  
 Revise & Resubmit

DATE: \_\_\_\_\_  
 SIGN: \_\_\_\_\_

Tel 612.332.1223 Fax 612.332.1224

**asi**  
 Signage Innovations™  
 Minneapolis, Minnesota  
 Milwaukee, Wisconsin  
 Seattle, Washington  
 Portland, Oregon  
 asisignage.com

**SHEET 3**

These drawings involve confidential proprietary rights of ASI & all design, manufacturing, reproduction, use & sale rights regarding the same are expressly reserved. These drawings are submitted under a confidential relationship for a specified purpose & the recipient, by accepting this document, assumes custody & agrees (a) that this document will not be copied or reproduced in whole or in part, nor its contents revealed in any manner or to any person except to meet the purpose for which it was delivered & (b) that any special features peculiar to this design will not be incorporated in other projects.

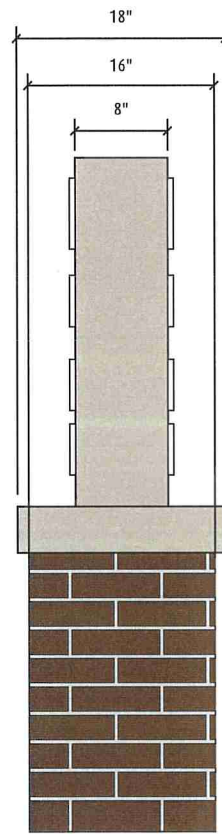
# Sign Type U.3

## Exterior Directional ID

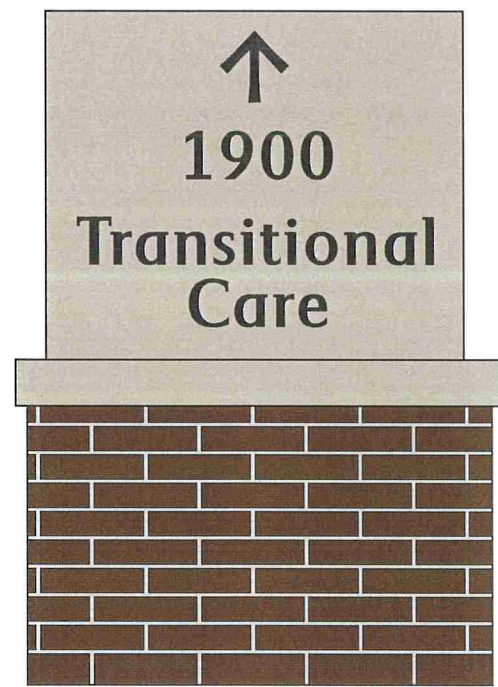
### Specifications

ASI Series: Custom  
 Cabinet Size: 30"(h) x 36"(w) x 8"(d)  
 Mounting: Mechanical Mount

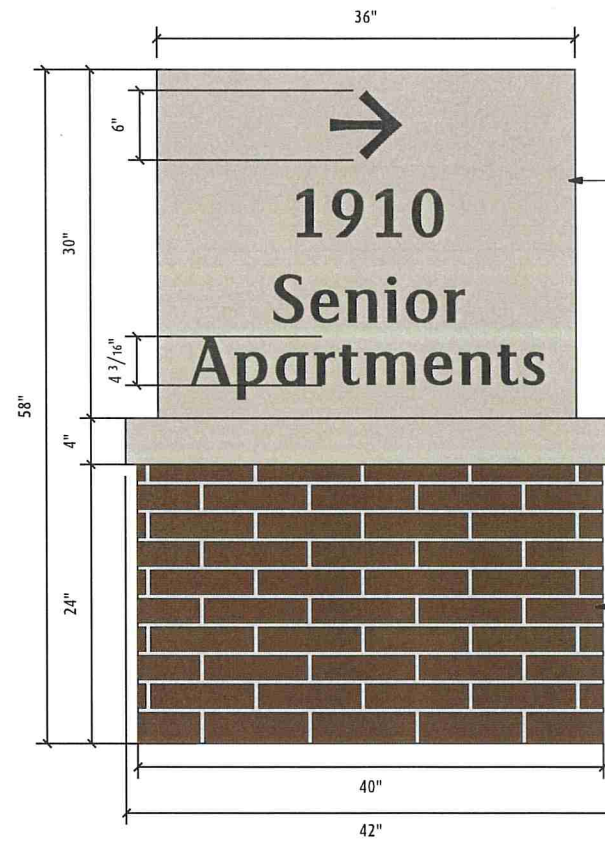
Note(s):  
 - Internally Illuminated using White LED's  
 - 120v  
 - Photo Eye & Switch



Side View



(Side B)



Layout View - Side A (Location 6) Qty: 1

Fabricated aluminum cabinet with changeable faces, painted to match Stoneworks 'Indiana Limestone' (Exact paint color TBD);  
 Graphics to be routed out of cabinet face, backed with White Lexan with 1/2" push-thru graphics with Translucent Duranodic (230-69) applied to faces

Cabinet to illuminate during evening hours using internal White LED's

Precast Concrete Cap, to match Stoneworks 'Indiana Limestone #2477' (Provided by Other)

Rockface blocking base, to match Amcon #618 'Sandstone' (Provided by Other)

Client: Presbyterian Homes & Services  
 Project: Langton Shores - Exterior Signage  
 Location: Roseville, MN  
 Keyword(s): Building ID, Illuminated

Scale: 1/16" = 1"  
 Date: 10.02.19  
 Drawn By: BMV  
 Sales / PM: TC / JM  
 File Name: 4\_PH-LS\_Ext\_U.3\_10.19

DRAWING REVISIONS  
 Rv1: 10.21.19 Rv2: ° Rv3: °  
 Rv4: ° Rv5: ° Rv6: °

DESIGN STATUS:  APPROVED  
 Approved As Noted  
 Revise & Resubmit

DATE: \_\_\_\_\_ SIGN: \_\_\_\_\_

Tel 612.332.1223 Fax 612.332.1224

**asi**  
 Signage Innovations™  
 Minneapolis, Minnesota  
 Milwaukee, Wisconsin  
 Seattle, Washington  
 Portland, Oregon  
 asisignage.com

**SHEET 4**

These drawings involve confidential proprietary rights of ASI & all design, manufacturing, reproduction, use & sale rights regarding the same are expressly reserved. These drawings are submitted under a confidential relationship for a specified purpose & the recipient, by accepting this document, assumes custody & agrees (a) that this document will not be copied or reproduced in whole or in part, nor its contents revealed in any manner or to any person except to meet the purpose for which it was delivered & (b) that any special features peculiar to this design will not be incorporated in other projects.



# Sign Type U.3

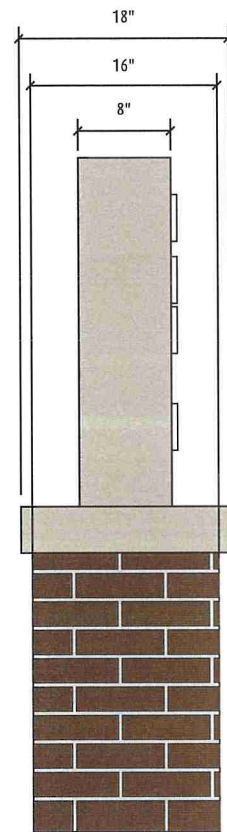
## Exterior Directional ID

### Specifications

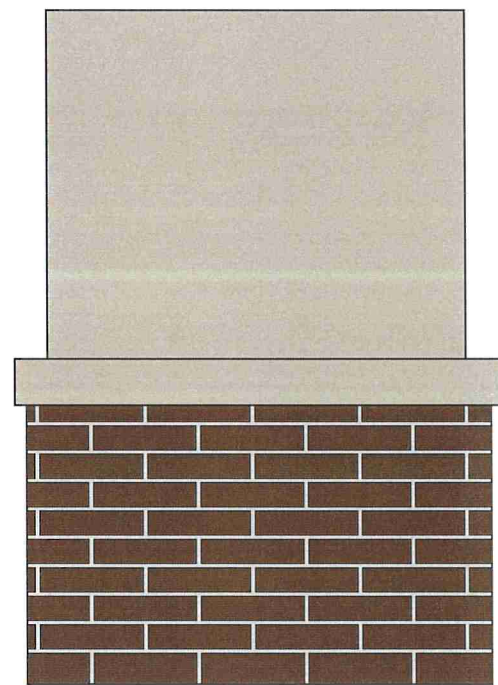
ASI Series: Custom  
 Cabinet Size: 30"(h) x 36"(w) x 8"(d)  
 Mounting: Mechanical Mount

### Note(s):

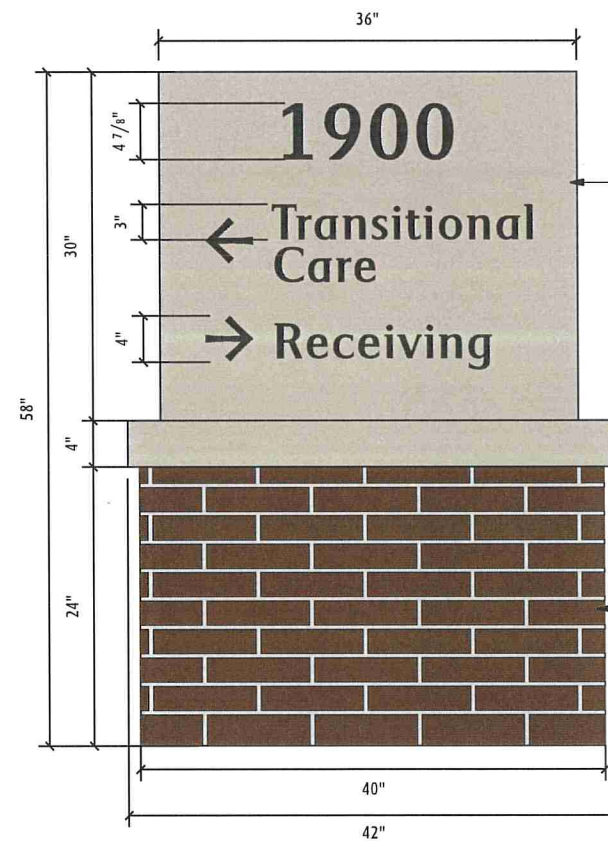
- Internally Illuminated using White LED's
- 120v
- Photo Eye & Switch



Side View



(Side B - Blank)



Layout View - Side A (Location 5A) Qty: 1

Fabricated aluminum cabinet with changeable faces, painted to match Stoneworks 'Indiana Limestone' (Exact paint color TBD);  
 Graphics to be routed out of cabinet face, backed with White Lexan with 1/2" push-thru graphics with Translucent Duranodic (230-69) applied to faces

Cabinet to illuminate during evening hours using internal White LED's

Precast Concrete Cap, to match Stoneworks 'Indiana Limestone #2477' (Provided by Other)

Rockface blocking base, to match Amcon #618 'Sandstone' (Provided by Other)

Client: Presbyterian Homes & Services  
 Project: Langton Shores - Exterior Signage  
 Location: Roseville, MN  
 Keyword(s): Building ID, Illuminated

Scale: 1/16" = 1"  
 Date: 10.21.19  
 Drawn By: BMV  
 Sales / PM: TC / JM  
 File Name: 5\_PH-LS\_Ext\_U.3\_10.19

**DRAWING REVISIONS**

Rv1: 11.06.19	Rv2: 11.12.19	Rv3: °
Rv4: °	Rv5: °	Rv6: °

**DESIGN STATUS:**  APPROVED  
 Approved As Noted  
 Revise & Resubmit

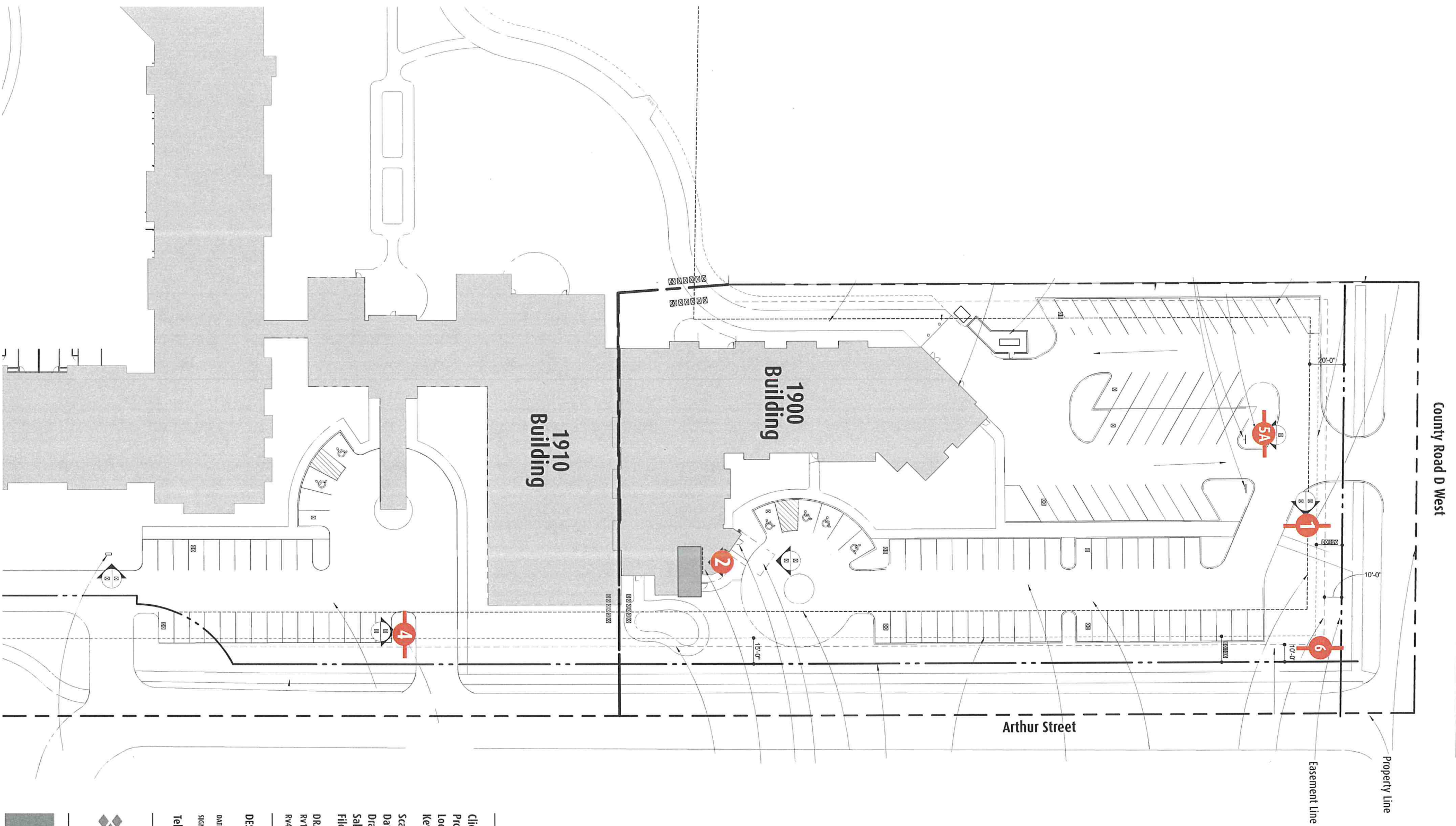
DATE: \_\_\_\_\_  
 SIGN: \_\_\_\_\_

Tel 612.332.1223 Fax 612.332.1224

**asi**  
 Signage Innovations™  
 Minneapolis, Minnesota  
 Milwaukee, Wisconsin  
 Seattle, Washington  
 Portland, Oregon  
 asisignage.com

These drawings involve confidential proprietary rights of ASI & all design, manufacturing, reproduction, use & sale rights regarding the same are expressly reserved. These drawings are submitted under a confidential relationship for a specified purpose & the recipient, by accepting this document, assumes custody & agrees (a) that this document will not be copied or reproduced in whole or in part, nor its contents revealed in any manner or to any person except to meet the purpose for which it was delivered & (b) that any special features peculiar to this design will not be incorporated in other projects.

# Sign Location Map



Client: Presbyterian Homes & Services  
 Project: Langton Shores - Exterior Signage  
 Location: Roseville, MN  
 Keyword(s): Site, Installation Guide

Scale: N/A  
 Date: 10.02.19  
 Drawn By: BMV  
 Sales / PM: TC / JM  
 File Name: 6\_PH-LS\_EXT\_Site\_10.19

DRAWING REVISIONS  
 RV1: 10.21.19 RV2: " RV3: " RV4: " RV5: " RV6: "

DESIGN STATUS:  APPROVED  Approved as Noted  Revise & Resubmit

DATE: \_\_\_\_\_ SIGN: \_\_\_\_\_  
 Tel 612.332.1223 Fax 612.332.1224



**SHEET 6**

These drawings provide confidential proprietary rights of ASI & all design, manufacturing, engineering, and construction information. ASI & its employees, agents, and contractors shall retain all rights in and to these drawings, including the right to use the information contained herein for any purpose whatsoever. These drawings are submitted under a confidential relationship for a specific purpose & the recipient, by accepting this document, assumes liability & agrees (a) that the document will not be copied or reproduced in whole or in part, nor its contents revealed in any manner or to any person except to meet the purpose for which it was delivered & (b) that any special license, peculiar to this design will not be incorporated in other projects.