



**MASTER SIGN PLAN
REVIEW COMMITTEE**

ADMINISTRATIVE HEARING NOTICE

The **MASTER SIGN PLAN** process has been created to afford property owners flexibility in designing site and building signage, and to allow adjacent property owners the opportunity to review/comment on signage proposals prior to their approval.

TIME & PLACE OF HEARING: The Master Sign Plan Review Committee will meet at 3:00 p.m. on Thursday April 5, 2012, in the Elm Room at City Hall, 2660 Civic Center Drive.

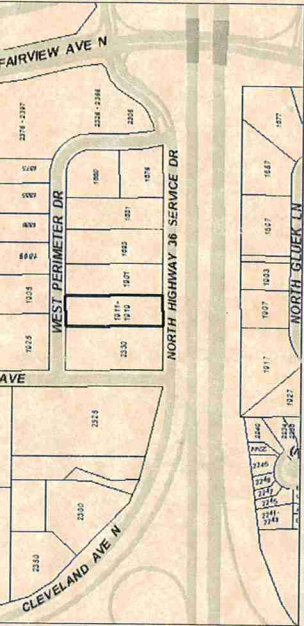
PURPOSE: Review a request for a **MASTER SIGN PLAN** for Mattress Firm/Spire

SITE: 1908-1911 Highway 36

APPLICANT: Spectrum Sign (MSP12-01)

How to Participate:

1. Call or email Thomas Paschke, City Planner, at 651-792-7074 or thomas.paschke@ci.roseville.mn.us prior to the hearing. Mail a letter or fax it to 651-792-7070.
2. Attend the hearing and address the Committee.



March 26, 2012

Prepared by: Community Development Department



City of Roseville
 Community Development
 2660 Civic Center Drive
 Roseville, MN 55113

Community Development Dept
 Thomas Pashke
 2660 Civic Center Drive
 Roseville MN 55113

1927
 1928
 1929
 1930
 1931
 1932
 1933
 1934
 1935
 1936
 1937
 1938
 1939
 1940
 1941
 1942
 1943
 1944
 1945
 1946
 1947
 1948
 1949
 1950
 1951
 1952
 1953
 1954
 1955
 1956
 1957
 1958
 1959
 1960
 1961
 1962
 1963
 1964
 1965
 1966
 1967
 1968
 1969
 1970
 1971
 1972
 1973
 1974
 1975
 1976
 1977
 1978
 1979
 1980
 1981
 1982
 1983
 1984
 1985
 1986
 1987
 1988
 1989
 1990
 1991
 1992
 1993
 1994
 1995
 1996
 1997
 1998
 1999
 2000
 2001
 2002
 2003
 2004
 2005
 2006
 2007
 2008
 2009
 2010
 2011
 2012
 2013
 2014
 2015
 2016
 2017
 2018
 2019
 2020
 2021
 2022
 2023
 2024
 2025
 2026
 2027
 2028
 2029
 2030
 2031
 2032
 2033
 2034
 2035
 2036
 2037
 2038
 2039
 2040
 2041
 2042
 2043
 2044
 2045
 2046
 2047
 2048
 2049
 2050
 2051
 2052
 2053
 2054
 2055
 2056
 2057
 2058
 2059
 2060
 2061
 2062
 2063
 2064
 2065
 2066
 2067
 2068
 2069
 2070
 2071
 2072
 2073
 2074
 2075
 2076
 2077
 2078
 2079
 2080
 2081
 2082
 2083
 2084
 2085
 2086
 2087
 2088
 2089
 2090
 2091
 2092
 2093
 2094
 2095
 2096
 2097
 2098
 2099
 2100