



**MASTER SIGN PLAN
REVIEW COMMITTEE**

ADMINISTRATIVE HEARING NOTICE

The **MASTER SIGN PLAN** process has been created to afford property owners flexibility in designing site and building signage, and to allow adjacent property owners the opportunity to review/comment on signage proposals prior to their approval.

TIME & PLACE OF HEARING: The Master Sign Plan Review Committee will meet at 3:00 p.m. on Thursday, May 10, 2012 in the Elm Room at City Hall, 2660 Civic Center Drive.

PURPOSE: Review a request for a **MASTER SIGN PLAN** for Flame Development

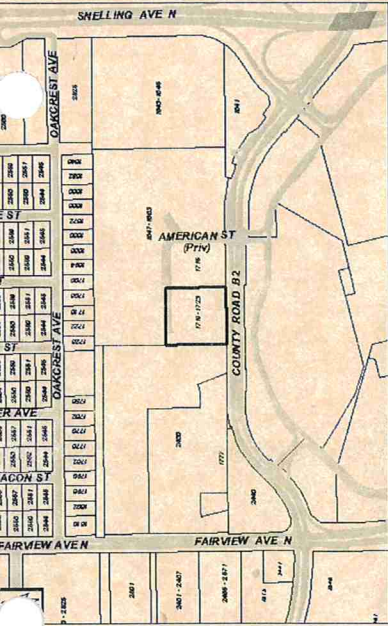
SITE: 1723 County Road B2

APPLICANT: Perry Bolin Architects (MSP12-03)

How to Participate:

1. Call or email Thomas Paschke, City Planner, at 651-792-7074 or thomas.paschke@ci.roseville.mn.us prior to the hearing. Mail a letter or fax it to 651-792-7070.
2. Attend the hearing and address the Committee.

Please see map on reverse side for property location.



May 3, 2012

Prepared by: Community Development Department



City of Roseville
 Community Development
 2660 Civic Center Drive
 Roseville, MN 55113

Community Development
 Thomas Paschke
 2660 Civic Center Drive
 Roseville MN 55113

444-1111
 444-1112
 444-1113
 444-1114
 444-1115
 444-1116
 444-1117
 444-1118
 444-1119
 444-1120
 444-1121
 444-1122
 444-1123
 444-1124
 444-1125
 444-1126
 444-1127
 444-1128
 444-1129
 444-1130
 444-1131
 444-1132
 444-1133
 444-1134
 444-1135
 444-1136
 444-1137
 444-1138
 444-1139
 444-1140
 444-1141
 444-1142
 444-1143
 444-1144
 444-1145
 444-1146
 444-1147
 444-1148
 444-1149
 444-1150
 444-1151
 444-1152
 444-1153
 444-1154
 444-1155
 444-1156
 444-1157
 444-1158
 444-1159
 444-1160
 444-1161
 444-1162
 444-1163
 444-1164
 444-1165
 444-1166
 444-1167
 444-1168
 444-1169
 444-1170
 444-1171
 444-1172
 444-1173
 444-1174
 444-1175
 444-1176
 444-1177
 444-1178
 444-1179
 444-1180
 444-1181
 444-1182
 444-1183
 444-1184
 444-1185
 444-1186
 444-1187
 444-1188
 444-1189
 444-1190
 444-1191
 444-1192
 444-1193
 444-1194
 444-1195
 444-1196
 444-1197
 444-1198
 444-1199
 444-1200